

GDH200 ComfortWash™ by Hanes Garment Dyed Long Sleeve Tee

Screen Print

FC3 Full Chest(Standard): 12"w x 15"h / 10"w x 12"h(recommended), (max. 3 colors)

BA4 Back(Optional): 12"w x 13"h / 10"w x 12"h(recommended), (max. 3 colors)

LC Left Chest(Optional): 4"w x 4"h / 3"w x 3"h(recommended), (max. 3 colors)

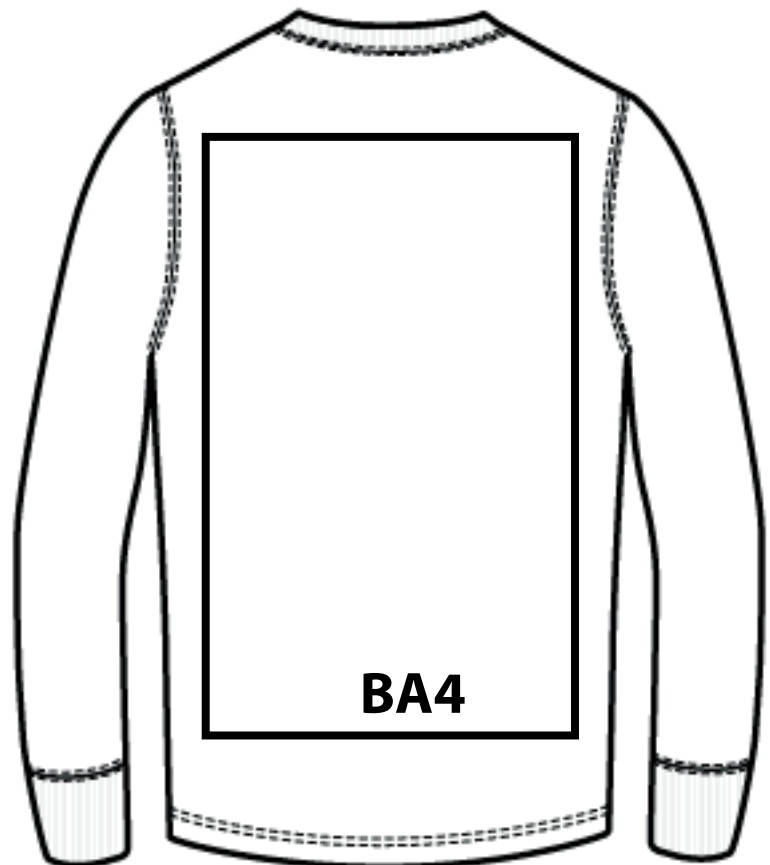
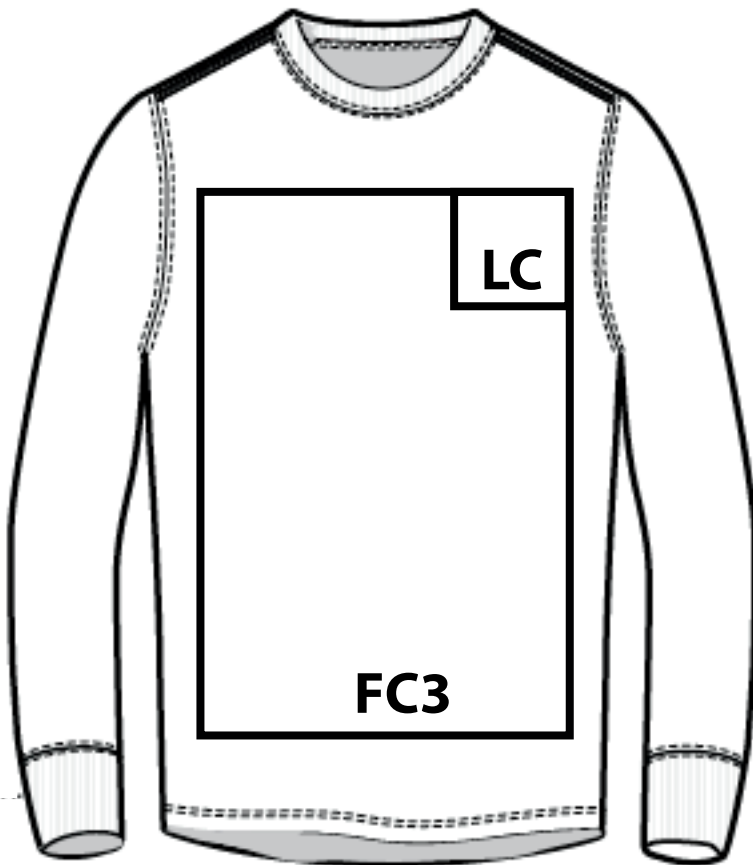
Minimum Font Size: 16 pt.

Minimum Line Weight: 1 pos / 2 neg

Halftones Not Available

**Fabric Content: 100% Cotton**

**COMFORTWASH**  
from the makers of Hanes™



**FC3 "Full Chest"- Top of art starts 3" down from center neck seam.**

**BA4 "Back"- Top of graphic will be placed 4" down from center back neck seam.**

**LC "Left Chest"- Top of graphic will be placed 7" down from high point shoulder, visually centered in the left half of the garment.**

