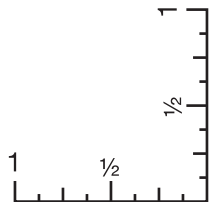
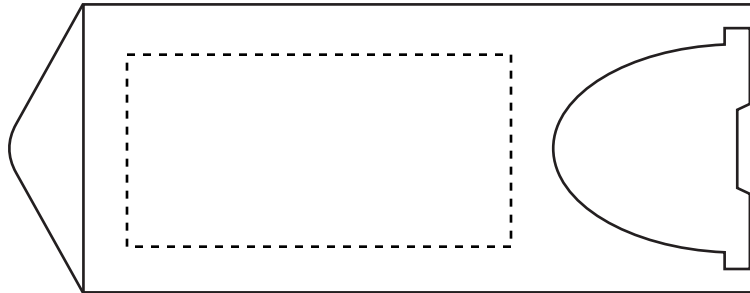




# ART TEMPLATE

## 40085 Original Colored Dispenser w/Custom Tattoo Bndg

1-Color - britePix®  
Top(Standard): 2"w x 1"h  
Full Color - britePix®  
Top(Optional, add'l charge): 2"w x 1"h  
Minimum Font Size: 5 pt.  
Minimum Line Weight: .5 pos / .5 neg  
Halftones Available





# ART TEMPLATE

## 40085 Original Colored Dispenser w/Custom Tattoo Bndg

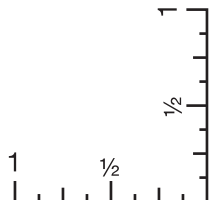
Flexograph

Centered on Bandage(Standard): 2.6875"w x .5"h  
(max. 2 colors)

Minimum Font Size: 7 pt. pos / 9 pt. neg

Minimum Line Weight: .7 pos / 1.5 neg

Halftones: 5-30%





# ART TEMPLATE

## 40085 Original Colored Dispenser w/Custom Tattoo Bndg

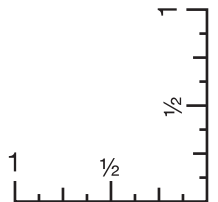
Flexograph

Step and Repeat on Bandage(Optional, add'l charge):  
1"w x .375"h (max. 2 colors)

Minimum Font Size: 7 pt. pos / 9 pt. neg

Minimum Line Weight: .7 pos / 1.5 neg

Halftones: 5-30%








# ART TEMPLATE

## 40085 Original Colored Dispenser w/Custom Tattoo Bndg

Flexograph  
Step and Repeat on Bandage Wrapper  
(Optional, add'l charge): 1.4375"w x .5"h (max. 2 colors)

Minimum Font Size: 7 pt. pos / 9 pt. neg  
Minimum Line Weight: .7 pos / 1.5 neg  
Halftones: 5-30%



Distributed by / Distribué par: <b>BIC Graphic</b> Red Wing, MN 55066 USA 0034929 Fabriqué aux É-U Not made with natural rubber latex N'est pas fabriqué à partir de latex de caoutchouc naturel	 contains one bandage / contient un bandage	Sterile unless individual wrapper is opened or damaged. Stérile à moins que l'emballage soit ouvert ou endommagé.	
Distributed by / Distribué par: <b>BIC Graphic</b> Red Wing, MN 55066 USA 0034929 Fabriqué aux É-U Not made with natural rubber latex N'est pas fabriqué à partir de latex de caoutchouc naturel	 contains one bandage / contient un bandage	Sterile unless individual wrapper is opened or damaged. Stérile à moins que l'emballage soit ouvert ou endommagé.	